

# *2D-human face recognition using SIFT and SURF descriptors of face's feature regions*

**Surbhi Gupta, Kutub Thakur & Munish Kumar**

**The Visual Computer**  
International Journal of Computer  
Graphics

ISSN 0178-2789

Vis Comput  
DOI 10.1007/s00371-020-01814-8



**Your article is protected by copyright and all rights are held exclusively by Springer-Verlag GmbH Germany, part of Springer Nature. This e-offprint is for personal use only and shall not be self-archived in electronic repositories. If you wish to self-archive your article, please use the accepted manuscript version for posting on your own website. You may further deposit the accepted manuscript version in any repository, provided it is only made publicly available 12 months after official publication or later and provided acknowledgement is given to the original source of publication and a link is inserted to the published article on Springer's website. The link must be accompanied by the following text: "The final publication is available at [link.springer.com](http://link.springer.com)".**



# 2D-human face recognition using SIFT and SURF descriptors of face's feature regions

Surbhi Gupta<sup>1</sup> · Kutub Thakur<sup>2</sup> · Munish Kumar<sup>3</sup>

© Springer-Verlag GmbH Germany, part of Springer Nature 2020

## Abstract

Face recognition is the process of identifying people through facial images. It has become vital for security and surveillance applications and required everywhere including institutions, organizations, offices, and social places. There are a number of challenges faced in face recognition which includes face pose, age, gender, illumination, and other variable condition. Another challenge is that the database size for these applications is usually small. So, training and recognition become difficult. Face recognition methods can be divided into two major categories, appearance-based method and feature-based method. In this paper, the authors have presented the feature-based method for 2D face images. speeded up robust features (SURF) and scale-invariant feature transform (SIFT) are used for feature extraction. Five public datasets, namely Yale2B, Face 94, M2VTS, ORL, and FERET, are used for experimental work. Various combinations of SIFT and SURF features with two classification techniques, namely decision tree and random forest, have experimented in this work. A maximum recognition accuracy of 99.7% has been reported by the authors with a combination of SIFT (64-components) and SURF (32-components).

**Keywords** Face recognition · SURF · SIFT · Decision tree · Random forest

## 1 Introduction

Face is a very important human trait. It is the most significant biological trait which differentiates one person from others. Whenever we want to authorize someone manually, we simply recognize the face and authorize it. When an intelligent system/machine mimics this human behavior, it is known as face detection. Face recognition is a science of recognizing the human face from a number of images/database. It is a very significant area of research as it has wide applications in various domains. There are enormous applications of face recognition. Major applications include the authentication of users for various applications and devices. It includes unlocking of laptops, mobiles, and other software-based sys-

tems. Another application is in forensics and investigations where faces are needed to be recognized. Recent applications include intruder detection by various institutes, laboratories, and organizations. Face recognition is based on realizing the biological traits of a human. Other identification techniques like fingerprint, signatures, ID, and PIN are widely used for personal identification and authorization, but the advantage of face recognition is significant. In the case of fingerprint or signature recognition, the person needs to give the impression or signature, respectively, but in face recognition, no such effort is required and the person under examination may not even realize that he is under observation. Moreover, the person need not remember anything as in the case of ID and PIN. It becomes less time-consuming and works exactly how people recognize and authorize other people in society.

Face recognition is essential whenever personal identification is required. Therefore, research in this domain is getting a significant contribution over the last decade. Face recognition is usually done by searching and matching a face from a given database. The database size may be small or large as per the application requirement. Face recognition is generally required for the automated identification of authorized, unauthorized, suspects, criminals, and others. Its main

✉ Munish Kumar  
munishcse@gmail.com

<sup>1</sup> Department of Computer Science and Engineering, Gokaraju Rangaraju Institute of Engineering and Technology, Hyderabad, Telangana, India

<sup>2</sup> Department of Professional Security Studies, Cyber Security, New Jersey City University, Jersey City, USA

<sup>3</sup> Department of Computational Sciences, Maharaja Ranjit Singh Punjab Technical University, Bathinda, Punjab, India

applications include automated surveillance, identification of missing/criminals/terrorists, and searching of database w.r.t to a particular face or its sketch. Face recognition has been proved very useful for the identification of missing/criminal/terrorist. The application becomes considerable when the recognition of a face is required to be done from a crowd. Recent advances in this domain aim at face detection in CCTV camera-obtained videos. Although face recognition algorithms have been quite successful, still there are a lot of open challenges. Aging of person, his pose/facial expressions, environmental features like Illumination/background, and similarity in siblings and blood relations are most of these [1]. Low resolution of images is another challenge [33]. The most significant parameter for a good face recognition algorithm is its accuracy. Advanced face algorithms are in practice nowadays. Advance face algorithm means the state-of-the-art algorithms that study the facial features along with the factors affecting facial features. Therefore, state-of-the-art solutions require the consideration of the face poses, light, and other factors for the higher recognition results.

## 2 Related work

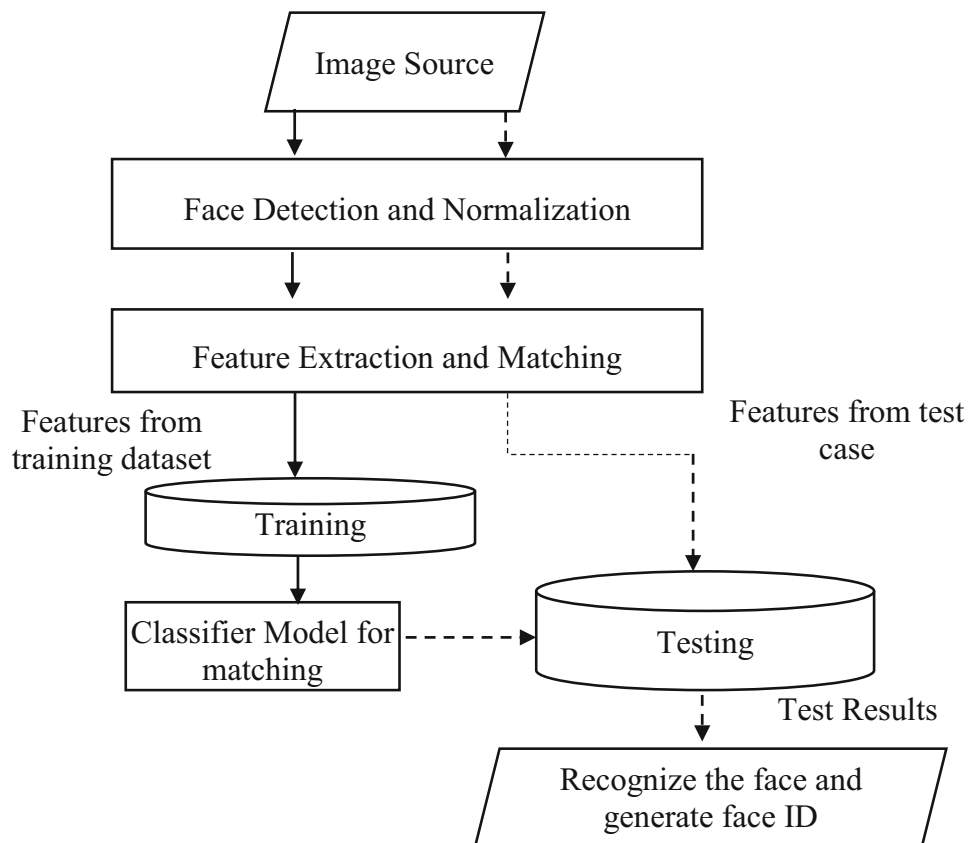
Face recognition may be performed on the basis of eigenfaces by performing principal component analysis [28]; Laplacian-faces to preserve local information [11]; fisher-faces [2]; multi-subregion-based correlation filtered faces [36]; nearest neighbor or subspace method and many more. A significant number of researchers then utilized key feature-based techniques. Initially, Du et al. [6] proposed a SURF-based feature extractor which is scale and in-plane rotation invariant. Usually, a SURF feature detector has 64 dimensions. The elaborated results were discussed for SURF-64, SURF-128, SIFT-128, SURFdb1-128, and SIFTdb1-128. Liong et al. [19] presented the unsupervised feature learning technique to learn feature representation from raw pixels automatically. The author used different feature dictionaries to represent features, and feature projection matrices were stored for face regions. Huang et al. [12] utilized the high-frequency sub-bands of wavelet transform to extract facial features. Efficient experiments were conducted on the FERET, ORL, and AR face database. Vinay et al. [30] proposed Oriented Fast and Rotated BRIEF (ORB)-based face recognition technique which was claimed to be a robust one with higher accuracy than the state of the art. Carro et al. [3] analyzed Speeded Up Robust Features (SURF) being the most efficient computationally. A matrix estimation method (RANSAC) was used. The proposed approach performed even with partial occlusions. Klemm et al. [15] proposed a key point-based technique for face detection. Performance comparison was done with techniques based on global features (Eigenfaces)

as well as techniques based on local (LBP, Gabor filters) features. Hassner et al. [9] proposed a novel template-based face recognition. The algorithm aims at increased accuracy with less computational and storage costs. Werghi et al. [35] presented an integrated approach using shape and texture local binary patterns (LBPs) for 3D face recognition. First, the LBP was calculated from face mesh, and then, a grid of descriptions was constructed. Naik and Panda [22] proposed an adaptive cuckoo search algorithm to improve the objective function values at a faster rate. The proposed algorithm was validated using twenty-three standard benchmark test functions. Three standard face databases, i.e., Yale2B, ORL, and FERET, were tested to claim the accurate recognition rate. Wen et al. [34] proposed convolutional neural networks (CNNs)-based new supervision signal, called center loss, for face recognition tasks. The center loss simultaneously learns a center for deep features of each class and penalizes the distances between the deep features and their corresponding class centers. Labeled Faces in the Wild (LFW), YouTube Faces (YTF), and MegaFace Challenge datasets were used for experimentation.

Guntupalli and Gobbini [8] emphasized the contribution of learning and interactions with other brain areas for the recognition of familiar faces. Lu et al. [21] proposed feature and dictionary learning techniques for face recognition from different poses, illuminations, expressions, and resolutions. Karczmarek et al. [13] proposed an extension of chain code-based local descriptor (CCBLD). A bag of visual word was suggested using chain codes. Chhabra et al. [5] proposed a content-based image retrieval (CBIR)-based system to extract features from faces. Oriented Fast and Rotated BRIEF (ORB) and scale-invariant feature transform (SIFT) were used. The proposed features were classified using a decision tree, random forest, and MLP. Li et al. [18] explained the importance of the integration of multiple types of features for accurate and robust face recognition. A new approach named color two-dimensional principal component analysis was proposed which was based on a convolution neural network.

Wang [31] studied the impact of age and gender on the identification of faces. A deep learning method was used to classify the facial features. An average recognition rate of 83.73% was obtained. Ranjan et al. [25] studied various face recognition covariates such as pose, illumination, expression, and image resolution. The proposed approach studied the effect of uncontrollable covariates such as race, age, and gender on face recognition.

**Fig. 1** Block diagram of the human face recognition system



### 3 Phases of a face recognition system

There are three basic steps in face recognition: face detection, feature extraction, and then face matching as illustrated in Fig. 1. These steps are just the simulation of human behavior while recognizing a face. Whenever, as humans, we are to recognize a face, we actually follow these steps unconsciously. Face detection is the primary step for face recognition. In this step, the system needs to identify the presence of face/s in the give image/scene if any. It aims at identifying a face by preprocessing and extracting a face image from an input image/scene. Face detection required preprocessing of image, i.e., face edge detection, segmentation, and localization. Edge detection is used to highlight the boundaries and other features of the face in the image. Then, segmentation and localization are used to locate and segment the highlighted face boundary from the rest of the image. After the region of interest, i.e., face patch has been obtained; it is followed by feature extraction and representation of the face region. The objective of feature extraction is to transform the face patch into a vector with a fixed dimension or a set of feature points with their corresponding locations. The objective is to extract and represent the intrinsic attributes of a face image. Features extracted may be visual features, statistical pixel features, transform coefficient features, or

algebraic features. Then, obtained face-intrinsic features are matched with an existing database of face-intrinsic features to perform face matching/classification. Feature extraction is the most important phase of the proposed face recognition system. In this phase, the significant features are extracted for face identification. In the present paper, two feature extraction techniques, namely SURF and SIFT, are considered for face recognition. These techniques are briefly discussed in the following subsections.

#### 3.1 Speeded up robust features (SURF)

SURF is a local feature extraction method. It uses a local invariant fast key point detector for extracting image feature key points. It utilized a distinctive descriptor [4] for extracting the image feature descriptor. It is a fast and robust computational method as compared to the SIFT feature extraction method. The main working of a SURF algorithm is as follows:

- The feature key points from an image are extracted based on the necessities.
- Then, the orientation is assigned to the key points. The orientation is assigned in circular motion with respect to the interesting key points.



- Later, the squared area is tuned according to the selected orientation.
- Lastly, feature descriptors are extracted using Haar wavelet responses. Usually, an 8D feature vector is extracted as a descriptor vector.

### 3.2 Scale-invariant feature transform (SIFT)

The SIFT detector extracts a number of meaningful descriptive image features. These features are invariant to scaling, rotation, and illumination. Such points are generally present in high-contrast areas, possibly on object edges. One significant quality of these features is that the relative positions between them should not change from one image to another.

The main stages in SIFT feature extraction are:

- The first stage is scale-space extrema extraction: in this stage, the interest points which are scale and rotation invariant are searched. Difference of Gaussian (DoG) function is used.
- Then, the key point localization and filtering are performed. In this stage, the location and scale for resultant interest points are found. Key points are selected which are robust to image distortion.
- The next stage is the Orientation Assignment in which one or more orientation is assigned to each key point location based on local image-gradient directions.
- Next, the feature description is performed. The local image gradients are measured at the selected scale in the neighborhood of a key point. And 128D feature descriptor is obtained.

### 3.3 Locality preserving projections (LPP)

He and Niyogi [10] proposed a feature reduction algorithm, called locality preserving projections (LPP). In the LPP algorithm, the neighborhood information is represented using a graph. Then, a transformation matrix is computed using Laplacian of that graph. The local neighborhood information is preserved. Since LPP is designed for preserving local structure, a search for nearest neighbor in the low-dimensional space will give almost the same results to that in the high-dimensional space. The major advantage of LPP is that it may be applied to any new data point to locate it in the reduced representation space.

## 4 Proposed system for face recognition

The proposed system of face recognition consists of various phases, namely preprocessing, feature extraction, classifier prediction, and lastly face recognition. First, the digital image undergoes the preprocessing stage. Preprocessing is a prelim-

inary phase of a face recognition system. Feature extraction is used to extract different features from the preprocessed image that results in some quantitative information of interest. This phase analyzes a set of features that can be used for distinctively grading the shape present in the image. Extracted features are global and local in nature and aim to detect the objects present in the image. Global features include geometrical shapes, texture, size, and color. Preliminary features from the input image are extracted to recognize a face by using geometrical shape features. SIFT and SURF feature extraction methodologies are used for extracting image feature descriptors. Further, the K-means clustering algorithm is used to generate 'K' number of clusters using the descriptor array. Lastly, LPP is used to reduce the dimensions of the feature vector.

### 4.1 Proposed algorithm

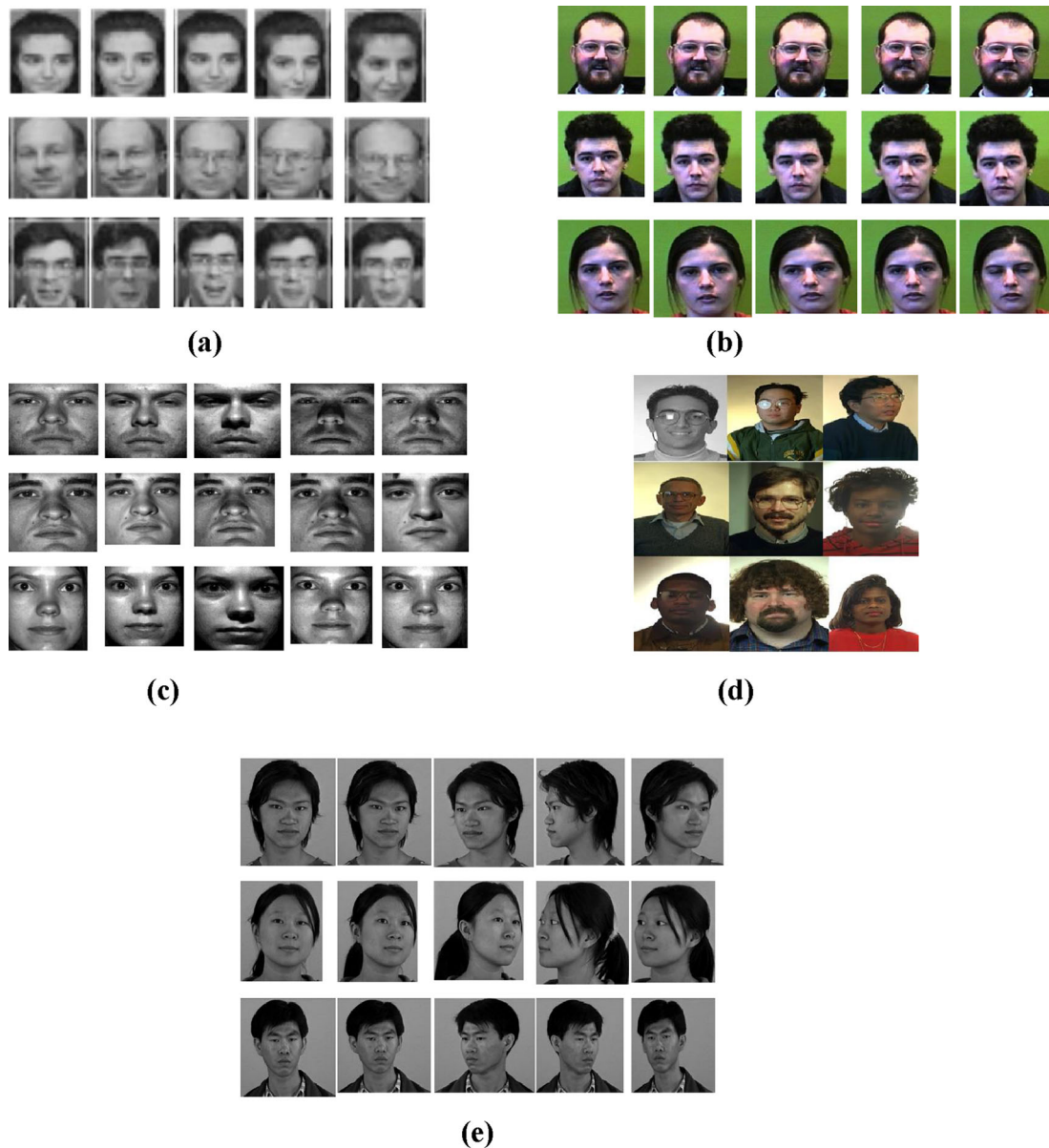
- Input: Query Image
- Step 1: Extract a feature descriptor from training images using SURF and SIFT as discussed
  - Step 2: Use the K-means clustering algorithm to generate 128 clusters. Compute the mean of every cluster to obtain a 128-dimensional feature vector for each descriptor
  - Step 3: Use the LPP dimensionality reduction algorithm to reduce the feature vectors of 128 units into 32 and 64 components
  - Step 4: Integrate both feature vectors, i.e., SURF and SIFT and store the combined feature vector in the database
  - Step 5: Train the proposed system using a combination of SURF and SIFT feature vectors to obtain the classifier model
  - Step 6: Test the trained classifier model by inserting the query object image and extract the SURF and SIFT features of a questioned image
  - Step 7: Predict the similarity between query object data features and trained dataset using the model classifier

## 5 Experimental results and discussion

In this proposed system, we conducted extensive experiments on five popular face image datasets, i.e., Yale2B, Face 94 and M2VTS, ORL, and FERET. A brief detail of these is provided in Table 1. A few face examples from the datasets are depicted in Fig. 2. In our experiments, features of SURF-32, SURF-64, SIFT-32, SIFT-64, and SURF-SIFT-128 are used, where 64 and 128 specify the dimensions of the feature vectors. The performance of the classifier is determined based on accuracy, true-positive rate, false-positive rate, and area under the curve.

**Table 1** Details of dataset used for experimental work

Database	Number of classes	Total number of images considered for experimental work	Training sample (%)
ORL Database (Fig. 2a) Samaria and Harter [26]	40 classes and 10 samples of each class	400 samples total	80
Face 94 (Fig. 2b) by Spacek	153 subjects and 20 samples of each class	3060 samples total	80
Yale2B Database (Fig. 2c) Georghiades et al. [7]	38 classes and 64 samples of each class	2432 samples total	80
FERET Database (Fig. 2d) Phillips et al. [23]	150 classes and 15 samples of each class	2250 samples total	80
M2VTS Database (Fig. 2e) Pigeon and Vandendorpe [24]	90 classes and 74 samples of each class	6660 samples total	80



**Fig. 2** A few face examples from the a ORL, b Face 94, c Yale2B, d FERET, and e M2VTS

Table 2 depicts the results obtained for the SURF and SIFT features for face recognition. Accuracy of face recognition has been presented for individual SURF and SIFT features and their integration. All the features are classified using the decision tree and random forest for three different face recognition datasets. The accuracy for the random forest is much better than a decision tree for Yale2B, FERET, and Face94 datasets, but vice versa for M2VTS and ORL. The encouraging results were obtained for Yale2B, ORL, and M2VTS datasets as compared to Face 94 and FERET datasets. Occlusion in FERET images is the main reason for the low performance of SIFT and SURF features. SIFT features performed better than SURF features when used independently, but the best results are obtained for their integration. The best recognition accuracy of 99.70% and 98.67% is obtained for the Yale2B and M2VTS datasets, respectively, using SIFT (64) + SURF (32) features. Table 3 elaborates on the TPR for all datasets using all combinations

of features with both the classifiers. The results obtained are clearly sustaining the claim for high TPR obtained. High TPR is obtained with a random forest classifier for Yale2B face datasets and with a decision tree classifier for M2VTS, respectively, with integrated feature set as expected. Table 4 illustrates FPR for all the datasets. Low TPR obtained for integrated features confirms the competence of classifying features and supports the claims for efficient classifier. The AUC obtained is tabulated in Table 5. High AUC >99–100 further explains that the proposed feature set is highly efficient for face recognition in images. Table 6 contains the evaluation time for each set of experiments. Most of the proposed feature-based classifiers took only a fraction of minutes to perform the recognition which demonstrates that the proposed model is computationally efficient.

The proposed algorithm is compared with various state-of-the-art techniques in Table 7. The proposed classifier has a higher recognition rate as compared to parallel techniques

**Table 2** Recognition accuracy using decision tree and random forest classifier

Feature extraction techniques	Decision tree classifier					Random forest classifier				
	Yale2B (%)	Face 94 (%)	M2VTS (%)	FERET (%)	ORL (%)	Yale2B (%)	Face 94 (%)	M2VTS (%)	FERET (%)	ORL (%)
SIFT (32)	65.7	51.8	84.7	60.2	81.9	96.0	81.0	91.1	71.3	83.0
SIFT (64)	76.9	67.7	98.6	64.2	86.3	98.1	86.3	89.2	75.9	95.5
SURF (32)	56.3	47.6	80.2	56.2	81.9	91.0	81.1	82.3	72.3	77.3
SURF (64)	67.3	58.2	88.5	61.8	72.7	82.9	72.0	88.3	64.2	94.2
SIFT (32) + SURF (32)	89.5	78.7	98.7	69.2	85.3	99.6	86.6	91.0	75.3	94.3
SIFT (32) + SURF (64)	84.4	72.2	98.7	64.6	86.2	99.1	87.2	91.0	76.7	93.2
SIFT (64) + SURF (32)	93.5	81.3	98.8	74.3	82.6	99.7	82.7	94.7	72.8	94.7
SIFT (64) + SURF (64)	82.3	74.2	98.7	72.5	86.2	99.2	87.3	91.6	76.8	94.7

**Table 3** True-positive rate using decision tree and random forest classifier

Feature extraction techniques	Decision tree classifier					Random forest classifier				
	Yale2B (%)	Face 94 (%)	M2VTS (%)	FERET (%)	ORL (%)	Yale2B (%)	Face 94 (%)	M2VTS (%)	FERET (%)	ORL (%)
SIFT (32)	65.70	51.80	84.70	45.60	81.80	96.00	81.00	91.10	70.20	82.30
SIFT (64)	77.00	67.70	98.60	59.60	87.20	98.10	86.30	89.20	72.30	88.40
SURF (32)	56.30	49.50	80.20	44.10	80.20	91.00	81.00	82.30	71.00	89.90
SURF (64)	67.30	59.20	88.50	52.10	74.10	83.00	73.00	88.30	64.30	88.80
SIFT (32) + SURF (32)	89.50	78.70	98.70	65.30	87.50	99.60	87.60	91.00	76.10	88.40
SIFT (32) + SURF (64)	84.40	74.20	98.60	64.20	87.10	99.10	87.20	91.00	74.20	84.90
SIFT (64) + SURF (32)	93.50	82.20	98.70	71.10	87.50	99.70	87.70	94.80	76.10	92.20



**Table 4** False-positive rate using decision tree and random forest classifier

Feature extraction techniques	False-positive rate using decision tree classifier					False-positive rate using random forest classifier				
	Yale2B (%)	Face 94 (%)	M2VTS (%)	FERET (%)	ORL (%)	Yale2B (%)	Face 94 (%)	M2VTS (%)	FERET (%)	ORL (%)
SIFT (32)	0.09	0.02	0.02	0.11	0.04	0.01	0.01	0.01	0.04	0.02
SIFT (64)	0.06	0.05	0	0.12	0.02	0	0.01	0.01	0.03	0.01
SURF (32)	0.12	0.10	0.02	0.16	0.02	0.02	0.04	0.02	0.06	0.01
SURF (64)	0.08	0.07	0	0.12	0.03	0.05	0	0.01	0.03	0.02
SIFT (32) + SURF (32)	0.03	0.02	0	0.13	0.02	0	0	0.01	0.02	0
SIFT (32) + SURF (64)	0.04	0.03	0	0.11	0.02	0	0	0.01	0.02	0
SIFT (64) + SURF (32)	0.02	0.01	0	0.12	0.01	0	0	0.01	0.01	0
SIFT (64) + SURF (64)	0.05	0.04	0	0.11	0.01	0	0	0.01	0.03	0

**Table 5** Area under curve using decision tree and random forest classifier

Feature extraction techniques	Decision tree classifier					Random forest classifier				
	Yale2B (%)	Face 94 (%)	M2VTS (%)	FERET (%)	ORL (%)	Yale2B (%)	Face 94 (%)	M2VTS (%)	FERET (%)	ORL (%)
SIFT (32)	82.4	99.4	98.7	95.4	98.4	96.0	99.7	99.9	95.7	98.7
SIFT (64)	88.2	77.6	99.6	74.3	76.7	100	88.0	99.0	84.4	86.2
SURF (32)	78.1	68.7	99.8	65.6	68.2	99.8	87.8	99.2	84.2	86.2
SURF (64)	83.1	73.1	99.9	69.9	72.6	99.8	87.8	99.1	84.2	86.3
SIFT (32) + SURF (32)	94.6	83.2	99.9	79.7	86.3	100	88.0	99.0	84.4	86.7
SIFT (32) + SURF (64)	92.0	80.9	99.9	77.5	82.5	99.1	87.2	99.0	82.6	84.4
SIFT (64) + SURF (32)	96.7	85.0	99.9	81.5	84.6	100	88.0	99.6	83.4	85.4
SIFT (64) + SURF (64)	90.9	79.9	99.9	76.5	84.1	100	88.0	99.3	85.4	85.4

**Table 6** Evaluation time taken by decision tree and random forest classifier

Feature extraction techniques	Decision tree classifier (in s)					Random forest classifier (in s)				
	Yale2B	Face 94	M2VTS	FERET	ORL	Yale2B	Face 94	M2VTS	FERET	ORL
SIFT (32)	0.72	0.57	0.03	0.59	0.16	0.17	0.31	0.01	0.43	0.02
SIFT (64)	0.58	0.52	0.06	0.51	0.24	0.12	0.10	0.04	0.16	0.03
SURF (32)	0.29	0.25	0.06	0.26	0.30	0.13	0.11	0.02	0.14	0.01
SURF (64)	0.80	0.70	0.29	0.68	0.15	0.23	0.20	0.06	0.24	0.05
SIFT (32) + SURF (32)	0.65	0.57	0.22	0.57	0.16	0.15	0.13	0.06	0.15	0.04
SIFT (32) + SURF (64)	0.84	0.73	0.23	0.72	0.72	0.23	0.20	0.08	0.26	0.06
SIFT (64) + SURF (32)	1.11	0.97	0.04	0.96	0.34	0.59	0.51	0.07	0.62	0.05
SIFT (64) + SURF (64)	1.45	1.27	0.12	1.24	1.14	0.20	0.17	0.08	0.23	0.06

**Table 7** Comparison with existing techniques

	Algorithm	Features	Recognition rate
ORL	[14] (with few sample)	Two-phase test sample sparse representation (TPTSSR)	93.33%
	[17]	1-level DWT/two-dimensional locality preserving projection (LPP) (64)	93.57%
	Liu et al. [20]	CSDL-SRC-power norm	95.5%
	Wang et al. [32]	Deep CNN	91.0%
	Proposed	SIFT (64)	95.5%
FACE94	[29]	SURF-detector-SIFT-descriptor	87.76%
	Proposed face	SIFT (64) + SURF (64)	87.3%
M2VTS	[16]	Rule-based face detection	86.5%
	Proposed	SIFT (64) + SURF (32)	98.8%
FERET	[14] (with few sample)	Improved linear regression classification (LRC)	85.83%
	[19]	Deep PCA(650 features)	76.65%
	[37]	Multi-task deep CNN	77.32%
	Proposed	SIFT (64) + SURF (64)	76.8%
YALE2B	Tan et al. [27]	2D-eulerPCA	91.00%
	Liu et al. [20]	CSDL-SRC-power norm	84.56%
	Proposed yale	SIFT (64) + SURF (32)	99.70

for ORL, YALE2B, and M2VTS dataset. The performance deteriorates only in the case of the FERET dataset due to occlusion in images.

*Experimentation on ORL dataset* In the ORL database, the images of the subject are taken at different times, under slightly varying lighting conditions and with various facial expressions. Some people are captured with glasses. The whole of the dataset was used for experiments. We have compared the achieved accuracy with the other state-of-the-art papers. SIFT features alone have performed efficiently in comparison with two-phase test sample sparse representation and 1-level DWT/two-dimensional locality preserving projection. The SIFT-based model has even outperformed deep CNN model for ORL dataset. The results indicate that SIFT features are capable to withstand changes in lighting and facial expression and glasses.

*Experimentation on FACE94 dataset* This dataset has male and female images, acquired against a plain green background. There are minor variations in head turn, tilt, slant, and the face position. Various face expressions are included, but no lighting variation is made. Comparable accuracy as Vinay et al. [29, 30] is obtained as they experimented only with a subset of dataset.

*Experimentation on M2VTS dataset* The advantage of the M2VTS dataset is that the appearance of subjects varies widely in different sessions. There are changes in tan, expression, hairstyle, etc., for the same person. There is a change in their glasses, or they did not wear in some sessions. Remarkable accuracy is obtained by SIFT (64)

+ SURF (32) features which ensure the usability of these features against expression, hairstyle, and glasses.

*Experimentation on FERET dataset* The FERET face database is one of the benchmark datasets for evaluating face recognition algorithms. The subjects included are diverse across ethnicity, gender, and age. These images have varying facial expression, illumination and have been taken in multiple sessions over years with some occlusion. We observed that comparable accuracy is achieved using SIFT (64) + SURF (64) features with low dimensionality as compared to Deep PCA (650 features) and multi-task deep CNN. Only, Ke et al. [14] claimed higher accuracy but used fewer samples for experimentation.

*Experimentation on the YALE2B dataset* Similar to other datasets, different images in YALE2B dataset are also having different facial expressions and lighting conditions. Our proposed model using SIFT (64) + SURF (32) features obtained an accuracy of 99.70% which is the best till now. The comparison with techniques based on 2D-eulerPCA and CSDL-SRC-power norm exposed that a significant improvement has been achieved with proposed features.

## 6 Conclusion

In this research paper, authors have proposed an effective and accurate face detection algorithm which is based on the integration of feature extraction using SURF and SIFT algorithm. The experimental results on FACE 94, Yale2B, ORL, FERET, and M2VTS datasets describe that the proposed approach is efficient and robust. The performance of

the classifier is determined based on accuracy, true-positive rate, false-positive rate, and area under the curve. The key features of the proposed research are that the face detection is highly accurate with a lower false-positive rate. Further, the algorithm is found to be computationally efficient. Two classifiers, i.e., decision tree and random forest, are used for the experimental results to validate the performance of the proposed system. The comparative or better results are obtained for various face datasets with the proposed feature-based model.

## Compliance with ethical standards

**Conflict of interest** The authors declared that they have no conflict of interest.

**Human and animal rights** Authors have presented an efficient approach for human face recognition using SIFT and SURF features. For the experimental results, authors have considered five public datasets like FACE 94, Yale2B, ORL, FERET, and M2VTS datasets.

## References

- Abdurrahim, S.H., Samad, S.A., Huddin, A.B.: Review on the effects of age, gender, and race demographics on automatic face recognition. *The Visual Computer* **34**(11), 1617–1630 (2018)
- Belhumeur, P.N., Hespanha, J.P., Kriegman, D.J.: Eigenfaces vs. Fisherfaces: recognition using class specific linear projection. *IEEE Trans. Pattern Anal. Mach. Intell.* **19**(7), 711–720 (1997)
- Carro, R.C., Larios, J.M.A., Huerta, E.B., Caporal, R.M., Cruz, F.R.: Face recognition using SURF. In: *The Proceedings of the International Conference on Intelligent Computing*, pp. 316–326 (2015)
- Cedillo-Hernandez, M., Cedillo-Hernandez, A., Nakano-Miyatake, M., Perez-Meana, H.: Content based video retrieval system for mexican culture heritage based on object matching and local-global descriptors. In: *The Proceedings of the International Conference on Mechatronics, Electronics and Automotive Engineering*, pp. 38–43 (2014)
- Chhabra, P., Garg, N.K., Kumar, M.: Content-based image retrieval system using ORB and SIFT features. *Neural Comput. Appl.* (2018). <https://doi.org/10.1007/s00521-018-3677-9>
- Du, G., Su, F., Cai, A.: Face recognition using SURF features. *Pattern Recognit. Comput. Vis.* **7496**, 749628 (2009)
- Georghiades, A., Belhumeur, P., Kriegman, D.: From few to many: illumination cone models for face recognition under variable lighting and pose. *IEEE Trans. Pattern Anal. Mach. Intell.* **23**(6), 643–660 (2001)
- Guntupalli, J.S., Gobbini, M.I.: Reading faces: from features to recognition. *Trends Cognit. Sci.* **21**(12), 915–916 (2017)
- Hassner, T., Masi, I., Kim, J., Choi, J., Harel, S., Natarajan, P., Medioni, G.: Pooling faces: template based face recognition with pooled face images. In: *the Proceedings of the IEEE Conference on Computer Vision and Pattern Recognition Workshops*, pp. 59–67 (2016)
- He, X., Niyogi, P.: Locality preserving projections. In: *Advances in Neural Information Processing Systems*, pp. 153–160 (2004)
- He, X., Yan, S., Hu, Y., Niyogi, P., Zhang, H.J.: Face recognition using laplacianfaces. *IEEE Trans. Pattern Anal. Mach. Intell.* **27**(3), 328–340 (2005)
- Huang, Z.H., Li, W.J., Wang, J., Zhang, T.: Face recognition based on pixel-level and feature-level fusion of the top-level's wavelet sub-bands. *Inf. Fusion* **22**, 95–104 (2015)
- Karczmarek, P., Kiersztyn, A., Pedrycz, W., Dolecki, M.: An application of chain code-based local descriptor and its extension to face recognition. *Pattern Recognit.* **65**, 26–34 (2017)
- Ke, J., Peng, Y., Liu, S., Li, J., Pei, Z.: Face recognition based on symmetrical virtual image and original training image. *J. Mod. Opt.* **65**(4), 367–380 (2018)
- Klemm, S., Andreu, Y., Henríquez, P., Matuszewski, B.: Robust face recognition using key-point descriptors. In: *the Proceedings of the 10th International Conference on Computer Vision Theory and Applications*, pp. 447–454 (2015)
- Kotropoulos, C., Pitas, I.: Rule-based face detection in frontal views. *IEEE Int. Conf. Acoustics Speech Signal Process.* **4**, 2537–2540 (1997)
- Li, G., Zhou, B., Su, Y.N.: Face recognition algorithm using two dimensional locality preserving projection in discrete wavelet domain. *Open Autom. Control Syst. J.* **7**(1), 1721–1728 (2015)
- Li, J., Qiu, T., Wen, C., Xie, K., Wen, F.Q.: Robust face recognition using the deep C2D-CNN model based on decision-level fusion. *Sensors* **18**(7), E2080 (2018)
- Liong, V.E., Lu, J., Wang, G.: Face recognition using deep PCA. In: *2013 9th International Conference on Information, Communications and Signal Processing*, IEEE, pp. 1–5 (2013)
- Liu, B.D., Shen, B., Gui, L., Wang, Y.X., Li, X., Yan, F., Wang, Y.J.: Face recognition using class specific dictionary learning for sparse representation and collaborative representation. *Neurocomputing* **204**, 198–210 (2016)
- Lu, J., Wang, G., Zhou, J.: Simultaneous feature and dictionary learning for image set based face recognition. *IEEE Trans. Image Process.* **26**(8), 4042–4054 (2017)
- Naik, M.K., Panda, R.: A novel adaptive cuckoo search algorithm for intrinsic discriminant analysis based face recognition. *Appl. Soft Comput.* **38**, 661–675 (2016)
- Phillips, P.J., Moon, H., Rizvi, S.A., Rauss, P.J.: The FERET evaluation methodology for face-recognition algorithms. *IEEE Trans. Pattern Anal. Mach. Intell.* **22**(10), 1090–1104 (2000)
- Pigeon, S., Vandendorpe, L.: The M2VTS multimodal face database (release 1.00). In: *International Conference on Audio-and Video-Based Biometric Person Authentication*, Springer, Berlin, pp. 403–409 (1997)
- Ranjan, R., Patel, V.M., Chellappa, R.: Hyperface: a deep multi-task learning framework for face detection, landmark localization, pose estimation, and gender recognition. *IEEE Trans. Pattern Anal. Mach. Intell.* **41**(1), 121–135 (2019)
- Samaria, F.S., Harter, A.C.: Parameterisation of a stochastic model for human face identification. In: *Proceedings of 2nd IEEE Workshop Applications Computer Vision*, vol. 557, no. 4, pp. 138–142 (1994)
- Tan, H., Zhang, X., Guan, N., Tao, D., Huang, X., Luo, Z.: Two-dimensional Euler PCA for face recognition. In: *The Proceedings of the International Conference on Multimedia Modeling*, pp. 548–559 (2015)
- Turk, M., Pentland, A.: Face recognition using eigenfaces. In: *Proceedings of the International Conference on Computer Vision and Pattern Recognition*, pp. 586–591 (1991)
- Vinay, A., Hebbar, D., Shekhar, V.S., Murthy, K.B., Natarajan, S.: Two novel detector-descriptor based approaches for face recognition using sift and surf. *Procedia Comput. Sci.* **70**, 185–197 (2015)
- Vinay, A., Rao, A.S., Shekhar, V.S., Kumar, A., Murthy, K.B., Natarajan, S.: Feature extraction using ORB-RANSAC for face recognition. *Procedia Comput. Sci.* **70**, 174–184 (2015)

31. Wang, D.: Effect of subject's age and gender on face recognition results. *J. Vis. Commun. Image Represent.* **60**, 116–122 (2019)
32. Wang, W., Yang, J., Xiao, J., Li, S., Zhou, D.: Face recognition based on deep learning. In: *International Conference on Human Centered Computing*. Springer, Cham, pp. 812–820 (2014)
33. Wang, Z., Miao, Z., Wu, Q.J., Wan, Y., Tang, Z.: Low-resolution face recognition: a review. *Vis. Comput.* **30**(4), 359–386 (2014)
34. Wen, Y., Zhang, K., Li, Z., Qiao, Y.: A discriminative feature learning approach for deep face recognition. In: *The Proceedings of the European Conference on Computer Vision*, pp. 499–515 (2016)
35. Werghe, N., Tortorici, C., Berretti, S., Del, B.A.: Boosting 3D LBP-based face recognition by fusing shape and texture descriptors on the mesh. *IEEE Trans. Inf. Forensics Secur.* **11**(5), 964–979 (2016)
36. Yan, W.J., Li, X., Wang, S.J., Zhao, G., Liu, Y.J., Chen, Y.H.: CASME II: an improved spontaneous micro-expression database and the baseline evaluation. *PLoS ONE* **9**:e86041 (2014). <https://doi.org/10.1371/journal.pone.0086041>
37. Zhang, C., Zhang, Z.: Improving multiview face detection with multi-task deep convolutional neural networks. In: *IEEE Winter Conference on Applications of Computer Vision*, pp. 1036–1041 (2014)

**Publisher's Note** Springer Nature remains neutral with regard to jurisdictional claims in published maps and institutional affiliations.



**Surbhi Gupta** received her B.Tech. degree in Computer Science & Engineering from the Punjab Technical University in 2002. She received her masters degree in merit from Punjab Agricultural University, Punjab, India, in 2004. She was awarded a Ph.D. degree in 2018 from IKG Punjab Technical University, India, in CSE. She has 15 years of experience in teaching and research. She is currently working as an Associate Professor at Gokaraju Rangaraju Institute of Engineering

and Technology, Hyderabad, India. She has published 37 papers in reputed international journals and conferences. She has 84 citations for her papers at Google Scholar. Her research interests include artificial intelligence, soft computing, machine learning, and digital image processing.



**Kutub Thakur, Ph.D.**, is the Director of NJCU Center for Cybersecurity, Assistant Professor and Director of Cybersecurity Program at New Jersey City University. He worked for various private and public entities such as United Nations, Lehman Brothers, Barclays Capital, ConEdison, City University of New York, and Metropolitan Transport Authority. He received his Ph.D. in Computer Science with specialization in cybersecurity from the Pace University, New York, M.S. in Engineering Electrical and Computer Control Systems from University of Wisconsin, and B.S. and A.A.S. in Computer Systems Technology from the City University of New York. He reviewed for many prestigious journals and published many papers in reputable journals and conferences. His research interests include digital forensics, network security, machine learning, IoT security, privacy, and security and user behaviour.



**Munish Kumar** received his masters degree in Computer Science & Engineering from Thapar University, Patiala, India, in 2008. He received his Ph.D. degree from Thapar University, Patiala, India, in 2015. He started his career as an Assistant Professor in Computer Application at Jaitu Centre of Punjabi University, Patiala. Presently, he is working as an Assistant Professor in the Department of Computational Sciences, Maharaja Ranjit Singh Punjab Technical University,

Bathinda, Punjab, India. He has published 80+ research articles in reputed international journals and conferences. He has 400+ citations for his papers at Google Scholar. His research interests include character recognition, computer vision and pattern recognition. He is a professional member of IEEE.